



# MedEd Newsletter

Medical Education Interest Group @ UNSW

Never Stand Still

Medicine

THURSDAY 23RD OCTOBER 2014

VOLUME 7, ISSUE 4

## IN THIS ISSUE

Faculty teaching awards	2
Scholarship of T&L	3
L&T news	4
L&T innovation	5
For your diary and joining MedEd	6
Uni-wide L&T events	7-8

## UNSW MEDICINE LEARNING AND TEACHING FORUM

**Wednesday 10th December**  
**9:00am to 2:00pm**

**Lunch at 1pm** following the UNSW Medicine Teaching Awards ceremony

**Wallace Wurth Lower Ground Floor Seminar room LG02** map ref C27

### Call for presentations & posters:

*Don't miss this annual opportunity to present your learning and teaching innovations, your blending innovations, curriculum development experience or evaluation, or your education research project or innovation ideas / proposals - to a friendly forum!*

### Presentation options:

**Paper:** 15 mins + 5 min Q&A, e.g. presentation of L&T funded project results, new curricular designs, evaluations – e.g. of innovative learning activities/ curricular change etc.

or

**Short presentation slot:** 5 mins presentation and 5 mins discussion: for presentation of new ideas, progress reports of L&T projects, pilot results, etc.

**Please send your title and 1 paragraph abstract to Rachel ([rachelt@unsw.edu.au](mailto:rachelt@unsw.edu.au)) by Monday 24<sup>th</sup> November.**

**Posters:** Let Rachel know if you can bring along your posters from this year's forums / conferences – we will post them up in the LG ante room for your colleagues to see.

**Details on how to register to attend will be circulated in mid-November.**

**Video-conferencing or online attendance** via Blackboard Collaborate will be available – please email Rachel to book ASAP.

## WELCOME

Dear Reader, Welcome to the last MedEd newsletter for this year. Please note the announcements re: the faculty Learning and Teaching Forum – to be held on Wed 10<sup>th</sup> Dec 9am-2pm (see details this page) and also that the nominations for the faculty teaching awards are now open – see page 2 for further details and advice. There are plenty of opportunities to learn more about blended and personalised learning in upcoming seminars and in recent publications. Hope to see you at the MedEd meeting or our L&T forum in December, Best wishes, Ed (RT)

## UPDATE: Medicine Blended Learning Project

### Prof Phil Jones (ADE)

We have almost completed the preparatory work for the Blended & Online Learning Project. The Faculty has appointed two education developers to assist staff – Lila Azouz who will primarily focus on the undergraduate programs and Martin Parisio who will focus on the postgraduate programs. Lila and Martin are currently reviewing staff needs to design staff development activities.

A survey is to be conducted soon that will give you the opportunity to indicate which learning resources you find useful and which ones you would appreciate some training. General information about resources for staff will be available on the UNSW Medicine Blended Learning Network Moodle site. Lila and Martin will also be available to assist individual staff who will be redesigning their teaching for the courses that have been targeted for 2015.

A media room in the AGSM should be ready for use next month. The room will provide equipment for staff to create audio or video recordings for teaching. Prior to using the room, you will need to be shown how to use the equipment, though essential information will be available on the Moodle site and in the room. Initially the priority for the room will be staff involved in developing resources for courses to be delivered in Semester 1, 2015.

### Next MedEd meeting, Tues 11<sup>th</sup> November, 12pm: The New Media Room- possibilities and practicalities (WW ground floor G15)

A demonstration of key resources available to you shortly (Lila Azouz/Martin Parisio)

### Connections Seminar: Thurs 30<sup>th</sup> October 3:30pm for 4pm start

**Medicine Blended Learning: Sharing experiences in creating content and implementing blended learning:** Presented by Angela Finch, Lu Liu, Greg Smith, Department of Pharmacology, School of Medical Sciences.

This session is for those interested in using or further developing the use of online and blended learning in your teaching. Would you like to hear what others are doing to help you plan and design your activities?

**Wallace Wurth Building, Kirby Institute Seminar Room, Level 6.**

### Want to know more? Need some help?

Contact: Lila Azouz (T: 02 9385 0613 E: [l.azouz@unsw.edu.au](mailto:l.azouz@unsw.edu.au)) or Martin Parisio (E: [m.parisio@unsw.edu.au](mailto:m.parisio@unsw.edu.au)). Or - take a look in Moodle: Login to our Moodle module for more information and advice from your peers. Enter the enrolment key **MedBL\_2014** in the tutor area: <http://moodle.telt.unsw.edu.au/course/view.php?id=11788>

# Faculty Teaching Awards 2014

**Nominations open = deadline Monday 17<sup>th</sup> November 5pm**

- Award for Teaching Excellence (One award)
- Awards for Outstanding Contributions to Student Learning (Maximum of Three awards)
- Award for Innovation in Learning and Teaching (One award)
- Award for Excellence in Enhancing the Student Experience (One award, specifically for Professional and Technical staff)

**For further details please see the faculty webpage on Awards.**

The awards will be judged by an internal panel and recipients invited to receive the awards at the Faculty Learning and Teaching Forum 2014, Wednesday 10<sup>th</sup> December.

**For more information or assistance:** please contact and discuss with your Department Head / Head of School, or contact the Faculty L&T Fellow, Dr Rachel Thompson on 9385 8038, email: [rachel.t@unsw.edu.au](mailto:rachel.t@unsw.edu.au)

**Tips from Dr Joanne Travaglia (awardee 2013) for going for Faculty Teaching Awards this year (full interview below):**

1. Be bold - don't hold back because the exercise is incredibly useful in itself and even if you don't get it you will have a chance to reflect on your strengths and weaknesses and improve those areas, and it will also help prepare you for applying for promotion
2. Be methodical. Keep everything in a folder - emails, CATEI, scans of thank-you letters etc. - as they are hard to remember /find
3. Be innovative. Create your own evaluation system - don't just rely on CATEI. Seek additional input - and think education not just teaching - appearing in the media can be educating the public as well as your students, supporting a new colleague is the same.

## Interview with Faculty Awardee 2013



**Dr Joanne Travaglia,  
SPHCM  
Award for Outstanding  
Contributions to Student  
Learning**

**How long have you been with UNSW?**

I have been with UNSW for 12 years

**How long have you been teaching?**

Define teaching! I have been involved in adult education since I first started working in the health and welfare fields in the 1980s. I have been teaching in Universities, on and off since the early 1990s.

**What courses do you teach / convene?**

PHCM9041 Foundations in Public Health & Health Care Systems  
PHCM9391 Strategy, Policy & Change  
PHCM9748 Clinical Governance & Risk Management  
PHCM9701 Health Leadership & Workforce Management  
PHCM9613 Management of Aged Care  
PHCM9662 Health Aspects of Crises, emergencies and disasters  
PHCM9702 Management of Lab Services  
PHCM9711 Managing Human Resources

**What do you most like about teaching?**

There isn't a class, workshop, course or session when I don't learn something. Our students work in healthcare across Australia and across the world, and are committed to improving the quality of care to all their clients. How incredible to be able to contribute (hopefully) to that process. Plus the opportunity to work one on one with higher degree research students.

**What do you most dislike about teaching?**

I don't dislike anything about teaching – but it is at times difficult to balance teaching, research and administration demands.

**What surprises you most about teaching?**

The students' insights – even having taught the same course for several years in a row, the fact that each time, each class is totally different in their approach and perspective to the topic. Plus the rapid change in terms of technology.

**If you had all the resources possible available to you (i.e. a "blue sky" situation), what would you most like to achieve in your main area of teaching?**

I would like to improve the quality and safety of care to vulnerable groups and individuals, by studying and facilitating cutting edge approaches to health management leadership.

**Best anecdote about teaching/ favourite quote?**

One of our students who is an ED registrar who said she wanted to do our health management degree so she could learn about how "the dark side operates"! But also the student who emailed to say he got a senior job in the health system because he was able to answer questions about strategic planning as a direct result of having done our courses.

**Any advice about going for teaching awards/ promotion?**

Keep records of everything. You need to put information into your portfolio of evidence as you go along, rather than waiting for the perfect time. Keep copies of emails from students, because they are harder to find in your general Outlook mailbox than you might think. Talk to colleagues, get feedback wherever you can, and show that you have implemented and listened to that feedback. Don't forget to proof read your application.

**What was your best ever holiday destination and why would you recommend it?**

Italy is home – where my family is, so I can't do much better than that. Don't go in Summer, but spring and autumn are lovely. I think winter is best – harder to get around, but the least number of tourists and incredibly atmospheric. I also love the Netherlands – I think Dutch people's sense of humour is a lot like Australians so we seem to "get" each other quite quickly and Amsterdam is endlessly fascinating, but still small enough to walk or bike everywhere.

# SoLT and Professional Development

## Interested in: Social media, learning and professionalism?

Take a look at our **Article of the Month**:

Fenwick, T. (2014). Social Media and Medical Professionalism: Rethinking the Debate and the Way Forward. *Academic Medicine*, 89(10), 1331–1334.  
[http://journals.lww.com/academicmedicine/Abstract/2014/10000/Social\\_Media\\_and\\_Medical\\_Professionalism\\_.13.aspx](http://journals.lww.com/academicmedicine/Abstract/2014/10000/Social_Media_and_Medical_Professionalism_.13.aspx)

## Interested in: Personalised Learning?

See our recent L&T forum posters for some inspiration!

## Medical Education Conferences 2014-5

### Report from AMEE 30 Aug- 3 Sept 2014, Milan, Italy

Dr Peter Harris

A rousing address by Richard Horton, Editor-in-Chief of the *Lancet*, began with the observation that only 2% of total expenditure in medicine is invested in education and that the smallness of this amount jeopardises the 98%. A brief report noting his call for medical students to be change agents is found in a **US student newsletter**.

An interesting international perspective on how health care systems rate was reported in a plenary about education and access (and note our ranking for cost related access): **'Mirror, Mirror on the Wall'** (The Commonwealth Fund).

A short paper of interest was presented by Luke Woodham et al from St George's (London) describing mobile data collection from observed clinical tasks. These data are entered into the student's smartphone and uploaded to a database in real time. (Possible application for: emed, miniCEX and Apps). See the full paper: 7G3 (22306) "Implementing electronic workplace-based assessments: Strategies and challenges", page 478 in the AMEE 2014 Abstract book.

As usual - travel the world and find a local product! A useful and scholarly website on assessment arising from an OLT project led by Monash University can be found at:

[www.assessmentdecisions.org](http://www.assessmentdecisions.org)

### Report from ACSME 2014, Sydney

Dr Rachel Thompson

The Australian Conference on Science and Mathematics Education (20th UniServe Science Conference). Held 29 Sept to 1 Oct 2014 at The University of Sydney and the University of Technology, Sydney. This was a really stimulating conference, with many interesting presentations on the conference theme: **Student Engagement: From the classroom to the workplace**, good networking opportunities and useful discipline-based workshops. The **keynote presentations** were thought-provoking: e.g. Prof Beverley Oliver (DVC Education, Deakin University) was enthusiastic about using digital tools to

enhance personalised learning; and Prof Liz Burd (PVC Teaching and Learning, Newcastle University) was passionate on how they are promoting the use of the flipped classroom spaces and how this can work with MOOCs.

**Conference proceedings** will be published shortly– keep an eye on the **ACSME proceedings** page for 2014!

## Upcoming conferences:

HERDSA 2015 is in Melbourne from 6th – 9th July, 2015 at the Melbourne Convention and Exhibition Centre. One of the demands facing contemporary higher education is to prepare students for life and work in a complex and uncertain future.

[Click here to register and submit your abstract!](#)

**Key dates:** Abstracts for full papers and pre conference workshops due on the 5<sup>th</sup> November, 2014 with full papers being due 15<sup>th</sup> February, 2015.

Remember, early bird registration is 17<sup>th</sup> April, 2015.

**Visit:** <http://www.herdsa2015.org/> for more detail on **submissions and for participation at the conference.**

## 12th APMEC Conference 2015

**Enhancing Faculty Development at the Workplace: From Theory to Practice - Trends, Issues, Priorities, Strategies (TIPS). Singapore. 4 – 8 February 2015.**

**12th APMEC Conference 2015.** 12th Asia Pacific Medical Education Conference (APMEC) and 3rd International Conference on Faculty Development in the Health Professions (FDHP). (Abstract submission now closed).

## Are you new to teaching / UNSW?

New teaching staff are invited to the next iteration of the Faculty Induction Day:

**Monday 24<sup>th</sup> November 9am - 4pm**

**Registration will open shortly. For more information - see the faculty L&T webpage.**

<http://med.unsw.edu.au/induction-day-new-teaching-staff>

## SoMS Coffee Club for Teachers

Meetings alternate between Wednesdays and Fridays at 11.00AM at the Level 3 Wallace Wurth kitchen table.

The next meeting will be 11-11.30am on **Wednesday 29<sup>th</sup> October**. Other members of Faculty are very welcome to drop in. (Please call 9385 1676 if you are having trouble negotiating access to WW).



## Quote of the Month

*"Knowing is not enough; we must apply.  
Willing is not enough; we must do."*

**Goethe (1749-1832)**

# Learning and Teaching News

## Upcoming LTU Connections Seminars

[<http://teaching.unsw.edu.au/connections>]

**October 30th, Thursday**

### Medicine Blended Learning: Sharing experiences in creating content and implementing blended learning:

Presented by Angela Finch, Lu Liu, Greg Smith, Department of Pharmacology, School of Medical Sciences.

This session is for those interested in using or further developing the use of online and blended learning in your teaching. Would you like to hear what others are doing to help you plan and design your activities? **Wallace Wurth Building, Kirby Institute Seminar Room, Level 6.**

**November 19th, Wednesday**

### Creating an Active Learning Environment Using the Flipped Classroom approach: A Community of Practice

Given the recent focus on flipped classroom at UNSW, it is timely to discover (1) what each other is doing in this area; (2) to share good practice and (3) to discuss pedagogical (e.g., how to motivate students to undertake weekly tasks) and administrative challenges (e.g. work-load for out-of-classroom hours). **UNSW Library Room 208**

**November 24th, Monday**

### MOOCs to Mainstream

Presented by Dr. Mike Ryan, UNSW Canberra  
In late April, UNSW Australia presented its first Massive Open Online Course (MOOC) on Coursera. The Introduction to Systems Engineering MOOC was delivered by Dr Mike Ryan and Dr Ian Faulconbridge from UNSW Canberra. In this presentation, Dr Ryan will provide a background to the design and development of the MOOC, lessons learned from implementation, and the relevance to the design of blended learning at UNSW. **Mathews Building, Room 102.**

**Subscribe** to the L&T e-Bulletin to keep informed of upcoming seminars.

**Email** [ltevents@unsw.edu.au](mailto:ltevents@unsw.edu.au) to make suggestions for future seminar topics.

## Recent UNSW Medicine Publications:

Balasoorya, C., Asante A., Jayasinha R., Razee H. (2014).

### Academic mobility and migration: Reflections of International Academics in Australia.

In Tight, M. and Maadad, N. (Eds.), *International Perspectives on Higher Education Research*. Emerald Press. Full chapter available here:

<http://www.emeraldinsight.com/doi/abs/10.1108/S1479-362820140000011013>

Ritchie, A., Jureidini, E. & Kumar, R.K. (2014). **Educating Junior Doctors to Reduce Requests for Laboratory Investigations: Opportunities and Challenges.** *Medical Science Educator*, 24(2), 161–163.

Please let **Kerrie Arnhold** know of new publications so that we can list them on our **webpage**.

## UNSW Library

### New Library Resource: Informit EduTV

This is an online TV streaming resource. This makes it easy for lecturers and students to find and instantly watch relevant television content. 10,000 programs including documentaries, drama and series complemented with study guides and articles are accessible via computer, tablet or smartphone. **Access is available at: Informit EduTV**

For library research support contact our **Outreach Librarians:**

**Kate Dunn** - T: 9385 1012

Email: [kate.dunn@unsw.edu.au](mailto:kate.dunn@unsw.edu.au)

Covering the Schools of: Public Health and Community Medicine, Medical Sciences, Psychiatry, Women's and Children's Health and affiliated centres.

**Josephine McGill** - T: 9385 1540

Email: [j.mcgill@unsw.edu.au](mailto:j.mcgill@unsw.edu.au)

Covering: Clinical Schools, Conjoint & liaison with Hospital Libraries

**Jonathon Valentine** -T: 9385 1039

Email: [j.valentine@unsw.edu.au](mailto:j.valentine@unsw.edu.au)

Covering: MRC & Institutes

## L&T @ UNSW

### Our faculty contacts in the LTU:

**Jan McLean** is a Senior Lecturer and Academic Developer.

*Her research interests centre on academic work and development and improving practice and policy in areas related to teaching, academic careers and development.*

**Contact:** [Jan.mclean@unsw.edu.au](mailto:Jan.mclean@unsw.edu.au) T: 9385 2509

**Sonal Bhalla** is an Educational Developer at the Learning and Teaching Unit. *Sonal's interests are in curriculum design, enhancing student learning experience, assessment and exploring innovative use of educational technologies to create an effective learning environment.*

**Contact:** [S.Bhalla@unsw.edu.au](mailto:S.Bhalla@unsw.edu.au) T: 9385 6188

## Moodle Workshops for Staff

Moodle training workshops have not been scheduled for Oct / Nov, but will be scheduled for S1 2015. More info:

<https://teaching.unsw.edu.au/telt-workshops>

## National Teaching Award

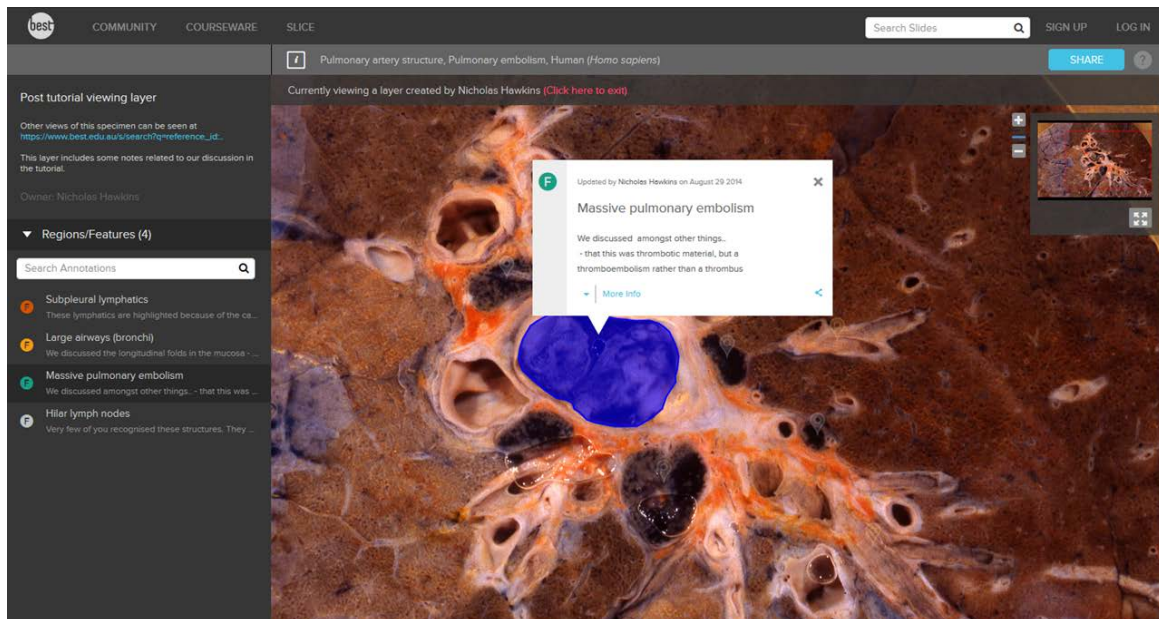
Congratulations to Dr Rachel Thompson on receiving an **OLT Citation for Outstanding Contributions to Student Learning**. Understandably, Rachel was reluctant to congratulate herself in the newsletter, but we couldn't let this pass without a formal acknowledgement. Rachel's nomination focused on her activities as the Faculty's L&T Fellow which is captured in the Citation: "*For leading the development of a vibrant medical education community that has fundamentally enhanced and enriched teaching and learning at the Faculty of Medicine.*" I'm sure all of us in MedEd agree that this is a well-deserved recognition.

*Prof Phil Jones, ADE.*

# Learning and Teaching Innovations

## Slice and dice by Prof Nick Hawkins, SoMS

The BEST Network image bank, 'SLICE', hosts over 10,000 biomedical images – from digital microscope slides to photographs of specimens, diagrams and radiology images- with tools to mark regions and add notes on the images. Because UNSW Medicine is a member of the BEST Network, Slice is available for use by staff and students across Medicine and Science.



The use of Slice has become more commonplace in SoMS, both in practical classes and lectures. Here I will highlight some of the ways that I have been using it in lectures to med and science students. I find Slice a useful way to display image in **lectures**, particularly when;

- The image is large and I can't show it all at a suitable level of magnification
- I want to make the image easily accessible to my students in a resolution that is superior to what they will get from a PDF of my PowerPoint slide
- I want to include annotations that guide my students as to relevant aspects of the image, and to be able to reuse those annotations in other contexts

In image-based disciplines, a very common complaint from students is that while the lecturer points to things on the image during the lecture, they are never sure what exactly was referred to later. Annotating a PowerPoint PDF is one way around this, but it is limited in various ways, and can't easily be reused. With Slice, images in PowerPoint presentations can be made clickable by hyperlinking to the image within the Slice database.

Slice offers a fair amount of control over exactly what you see in the browser when you click on the hyperlink. You can just show the [image](#), or you can show a [certain part of the image at a certain magnification](#), or you can show [your layer containing all of your annotations](#), or you can open SLICE so that [just one of those annotations is highlighted](#). The choice is yours, and depends on your educational needs.

The details of how to grab the right URLs to show these different views of the images and layers [is described elsewhere](#). I've written more about using Slice in lectures, editing annotations for different purposes, taking screenshots and managing long hyperlinks [here](#). If you make a PDF of the PowerPoint slides, the hyperlinks will stay live, as long as you "Save As PDF" and don't try to print to PDF! Then students can review the real image later when looking at the PDF of the lecture.

Slice is also very powerful when used in **practical classes**. Our students are increasingly using the tool in computer-based histology and histopathology classes, where they can work in groups or individually to mark regions on images and making notes as we discuss the features associated with the tissue or disease. As images are stored in the 'cloud', these images and any annotations are available to students anytime, anywhere. Personally, I've started using annotation layers to initiate class activities, and also to provide demonstrators or students with a 'master' slide as required. You can find more ideas about using Slice annotation layers in class [here](#).

For further information, please contact Stephanie Dowdell, BEST Network: T: 02 9385 0572; E: [s.dowdell@unsw.edu.au](mailto:s.dowdell@unsw.edu.au)

## FOR YOUR DIARY

If you can't make a meeting, you can attend *virtually* or view the recording by joining our Moodle group (details below) for online access via Blackboard Collaborate. Please contact [rachel.t@unsw.edu.au](mailto:rachel.t@unsw.edu.au) for RSVPs – physical or virtual. Alternatively, resources from MedEd meetings are also available at: <http://med.unsw.edu.au/meded-meetings-seminars>

DATE	TIME	TOPIC	LOCATION
<b>Tues 11 November</b>	12 pm – 1 pm	<b>The Media Room: possibilities and practicalities</b> <i>Blended learning educational developers Lila Azouz and Martin Parisio</i>	G14 & G15 Wallace Wurth Building
<b>Wed 10 December</b>	9 am – 2 pm	<b>UNSW Medicine Learning and Teaching Forum</b> <i>Presentations by staff 9am-1pm.</i> <i>Faculty Teaching Awards at 1pm, followed by buffet lunch.</i> <i>OPEN FOR ABSTRACTS – please see information on front page</i>	Wallace Wurth LG02

## ABOUT US

The MedEd Interest Group formed 8 years ago and now has over 130 members. The group aims to bring together all medical faculty staff interested in education, to support scholarly practice, encourage research and create new networks amongst its members. Our main activities include a monthly seminar series, a newsletter, and an annual research forum.

We can keep you in touch with upcoming grants, conferences, awards and new L&T publications, innovations and lots, lots more...

**This is your newsletter:** Please contribute— write a brief (<100 word) book review; send in info on new L&T research or useful resources or teaching tips that you come across to [rachel.t@unsw.edu.au](mailto:rachel.t@unsw.edu.au)

**MedEd contact and newsletter editor**

Dr Rachel Thompson, L&T Fellow, Senior Lecturer, Office of Medical Education, UNSW Medicine. Level 2, Wallace Wurth Building, UNSW, NSW 2052.  
**Phone:** 02 938 58038 | **Email:** [rachel.t@unsw.edu.au](mailto:rachel.t@unsw.edu.au)

## HOW TO KEEP IN TOUCH

**Why not join our Moodle group?**

For up to date information, recordings of the seminars and many more resources you should join our Moodle group. You can also attend our meetings virtually!

# Go to the link:

<http://moodle.telt.unsw.edu.au/course/view.php?id=6305>

# Log into Moodle with your zID/zPass if not already done so.

# Enter the key "MedEd" under 'enrol as student'.

You should now have access under MedEd course in your **UNSW Moodle** area.

**Subscribe to the MedEd email group!**

**Keep up to date with our newsletter - subscribe to the MedEd email group!**

Please fill in your details and submit via the **subscriber form** via the UNSW Medicine L&T pages.

Once on the list you will be sent regular, filtered emails on local and external learning and teaching activities, plus the newsletter will come to you directly 4 times a year. If you wish to unsubscribe you can do this via the same webpage.

## MORE INFORMATION ON LEARNING AND TEACHING @ UNSW MEDICINE

The **UNSW Medicine website** has support for new teachers, resources to help you teach, previous seminar and training recordings, and lots more! E.g. there is a page on [teaching evaluation](#). For many other useful topics, take a browse through **<Learning and Teaching>** under "For Staff" on our faculty website: <http://med.unsw.edu.au/learning-teaching>

**FORUM INVITE:**  
**Optimising Student Success, Resilience and Well-being:**  
**Growing graduate capabilities**

This Forum is for academic, professional staff and students who have an interest in student success, resilience and well-being.

**When: Friday 7 November, 8.30am-4pm**

**Where: Central Lecture Theatre 1, UNSW Australia**

**Program**

- 8:30-9: Registration, coffee.

**SESSION 1: 9-10**

- 9-9:10: Welcome.
- 9:10-9:30: KEYNOTE: Professor Wai Fong Chua (PVC Students) and Sandra Norris (Director, Student Life and Learning): What is happening at UNSW to support student success and well-being?
- 9:30-10: OLT Project Report: Jacky Cranney, Annie Andrews, Seher Arslan, Sue Morris.
- 10-10:30: Morning Tea

**SESSION 2: 10:30-12:30**

- 10:30-11:10: KEYNOTE: Rachael Field (QUT): Self-management for law students--the why, what and how.
- 11:10-12:30: OLT mini-project presentations
  - Justine Rogers (Law): "Bringing Your-Self to Law: interim results in a study of UNSW Law's new ethics course"
  - Megan Williams & Sally Fitzpatrick on behalf of Muru Marri (Medicine): "*Muru Marri's Critical Friends Circle: A learning community among Aboriginal and Torres Strait Islander post-graduate health researchers at UNSW*" (*Supported by LTU*)
  - Patti Shih, Lisa Watts, Suzanne Mobbs, Boaz Shulruf, Helen Scicluna, & Rachel Thompson (Medicine): "Time management: mobile apps and motivation among UNSW Phase 1 medical students" (*Supported by LTU*)
  - Agnes Heah (A&SS): "Stronger Support for Students at Risk"
  - Patricia Morgan (ASB, SLL) & Nico Roenpagel (A&D): "Report on *Standing Still to Learn*, the symposium on contemplative and creative approaches in education, May 2014, UNSW"
- 12:30-1:10: **Lunch**

**SESSION 3: 1:10-3:45+**

- 1:10-1:50 KEYNOTE: Paul Atkins (ANU) - Mindfulness improves staff work engagement, well-being and performance in a university setting.
- 1:50-2:20: KEYNOTE: Lydia Woodyatt (Flinders) - Show up; Don't beat yourself up. Addressing self-critical thinking in First Year Psychology through a Third Year Psychology Work Integrated Learning topic
- 2:20-2:50: Student panel: Whose responsibility is it to empower student resilience, success and well-being?
- 2:50-3:30: Closing comments, evaluation.
- 3:30-4: **Afternoon Tea.**

**Please register your attendance and dietary requirements here:**

<https://www.surveymonkey.com/s/S95X8WF>

**Need more information?**

**Contact: [j.cranney@unsw.edu.au](mailto:j.cranney@unsw.edu.au) or [a.andrews@unsw.edu.au](mailto:a.andrews@unsw.edu.au)**



## Mindfulness in education

### Tools for self-care and care of others

Never Stand Still

Student Life and Learning

## Learn simple effective methods to help with the increasing pressures we and our students currently face.

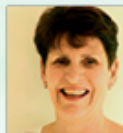
In this presentation three project officers from Student Life and Learning reflect on their personal and professional use of contemplative practices, outlining what has worked for them. This two hour workshop will provide a sound introduction to this innovative trend in education; including a brief outline of neuroscience and psychology research related to the benefits of using contemplation in education. These benefits include increased metacognition and the ability to focus, retain and retrieve information, and decreased stress and anxiety. This workshop is suitable for anyone with an interest in this emerging area in education.

### The Presenters:



Dr Patricia Morgan, Senior Project Officer with Student Life and Learning, recently completed an interdisciplinary

PhD in the School of Humanities at UNSW that looked at students experiences of contemplative education. She now lectures in contemplative ethics and leadership and teaches meditation on campus. Dr Morgan has a 16 year yoga and meditation practice.



Kate Mogown is the Academic Attainment Manager for an ASPIRE project called PATHS for Learning which is designed to

foster academic capabilities in the school setting. Mindful learning has been shown to complement and enhance the acquisition of academic skills and consequently it is one of three focus areas the PATHS for Learning website, which will offered to both primary and high school students in regional NSW."



Debbie Vadasz is a Project Officer with ASPIRE – a UNSW schools' outreach program set up to address

the educational disadvantage experienced by sections of Australian society. Working with students both in the classroom and at on-campus events, Debbie is looking at ways to incorporate contemplative practice into the work of ASPIRE. She has observed a personal meditation practice since 2001, and explored a variety of techniques for self-care over the years.

**WHERE:** The Staff Common Room, Level 2 School of Law, UNSW.

**WHEN:** 19th of November, 10am -12pm

Morning Tea will be provided and for those of you who are interested we will continue the conversation over lunch at a café nearby.

**To book please email Sarah Toohey on the below link. Places are limited so please book early.**

**We are looking forward to seeing you there.**

To book please email Sarah Toohey on [sarah.toohey@unsw.edu.au](mailto:sarah.toohey@unsw.edu.au)